

A decorative graphic on the left side of the page consists of a vertical blue bar, a thin grey line, and a grey square with a white spiral pattern. A horizontal grey line extends from the square across the top of the page. The background is white with a grid of light grey squares, each containing a white spiral pattern.

**ROME**



# What do you know about Roman Empire?

---

- Romans were
  - Energetic
  - Practical people
  - Combine function and beauty
  - Skills in engineering and architecture

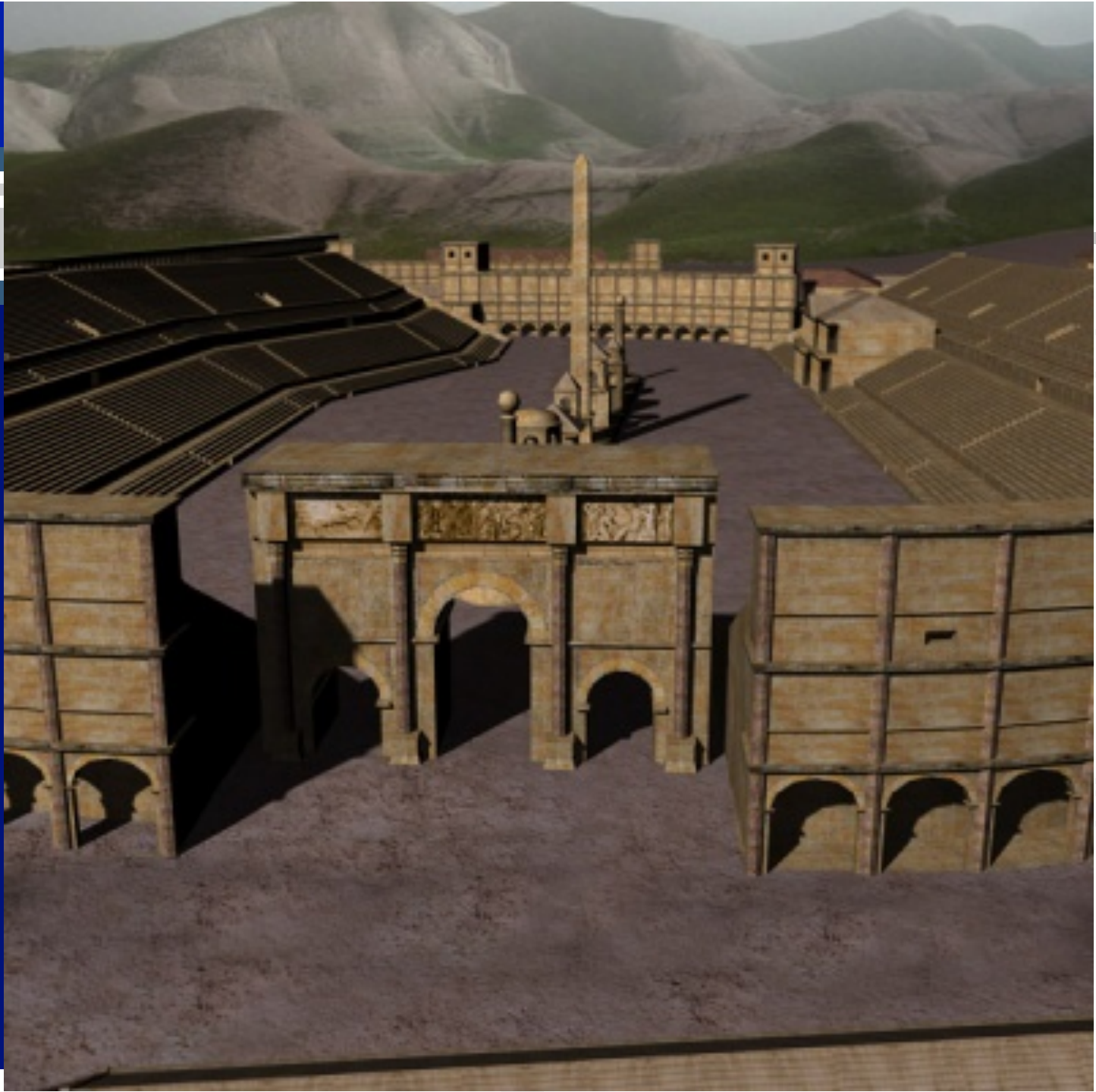


# Architecture

---

- It is practical and utilitarian
- Interest in public works and engineering
- Monumentality
- Great technical advances
- Colossal to show Roman power
- It is commemorative and propagandistic





# Characteristics

- Building systems:
  - Lintelled:
    - Copied from the Greeks
    - Spaces are closed by straight lines
  - Vaulted
    - Use of arches
    - Barrel vaults
  - Use of domes
  - Strong walls so that they do not use external supports

Arch

# The Pantheon



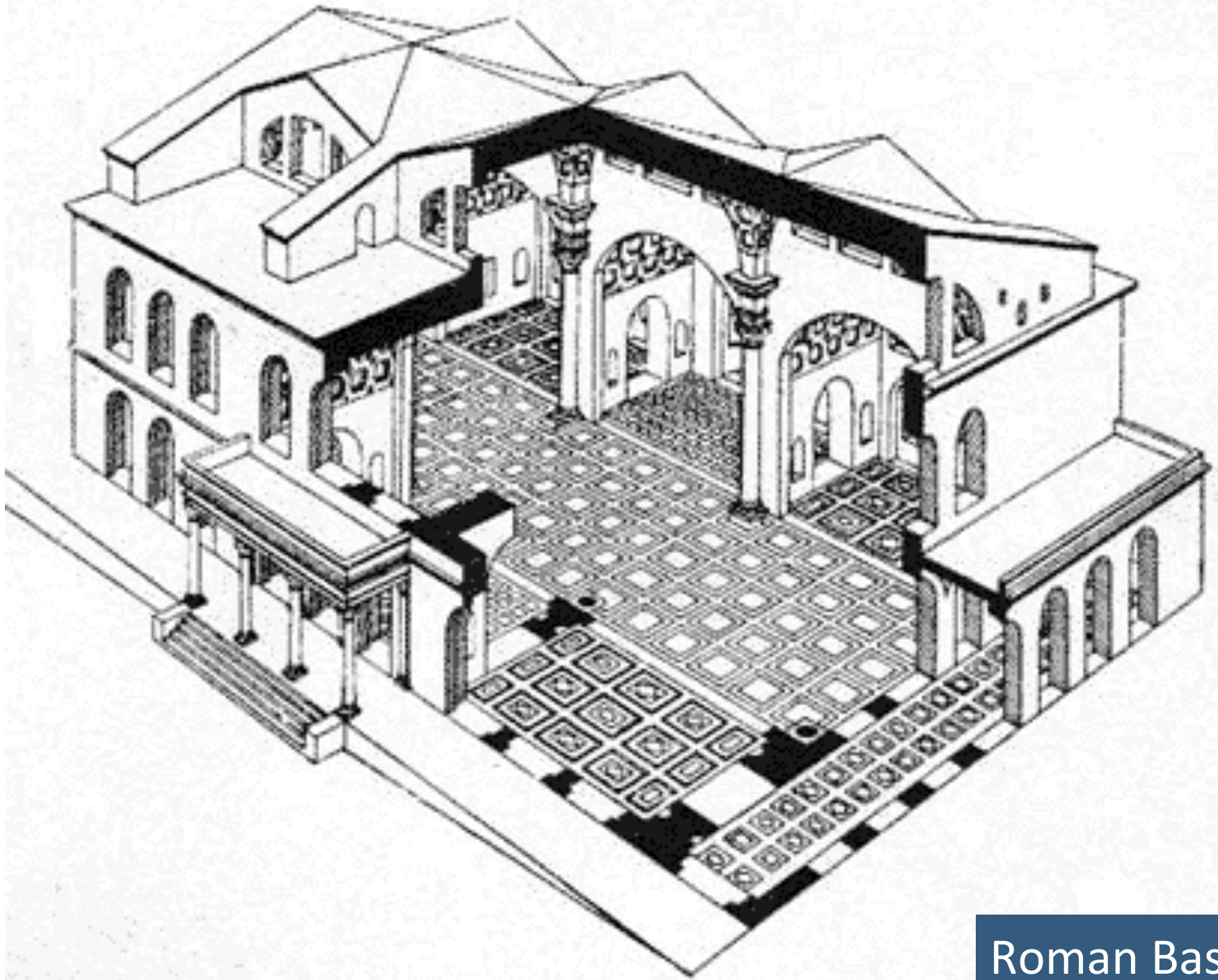


# The Pantheon (Interior)



# Roman Basilica





Roman Basilica

# Street at Pompeii







Upper Class house





Composite Column





# Commemorative Architecture



Arch of Constantine



Arch of Titus

Trajan column



# Bridges

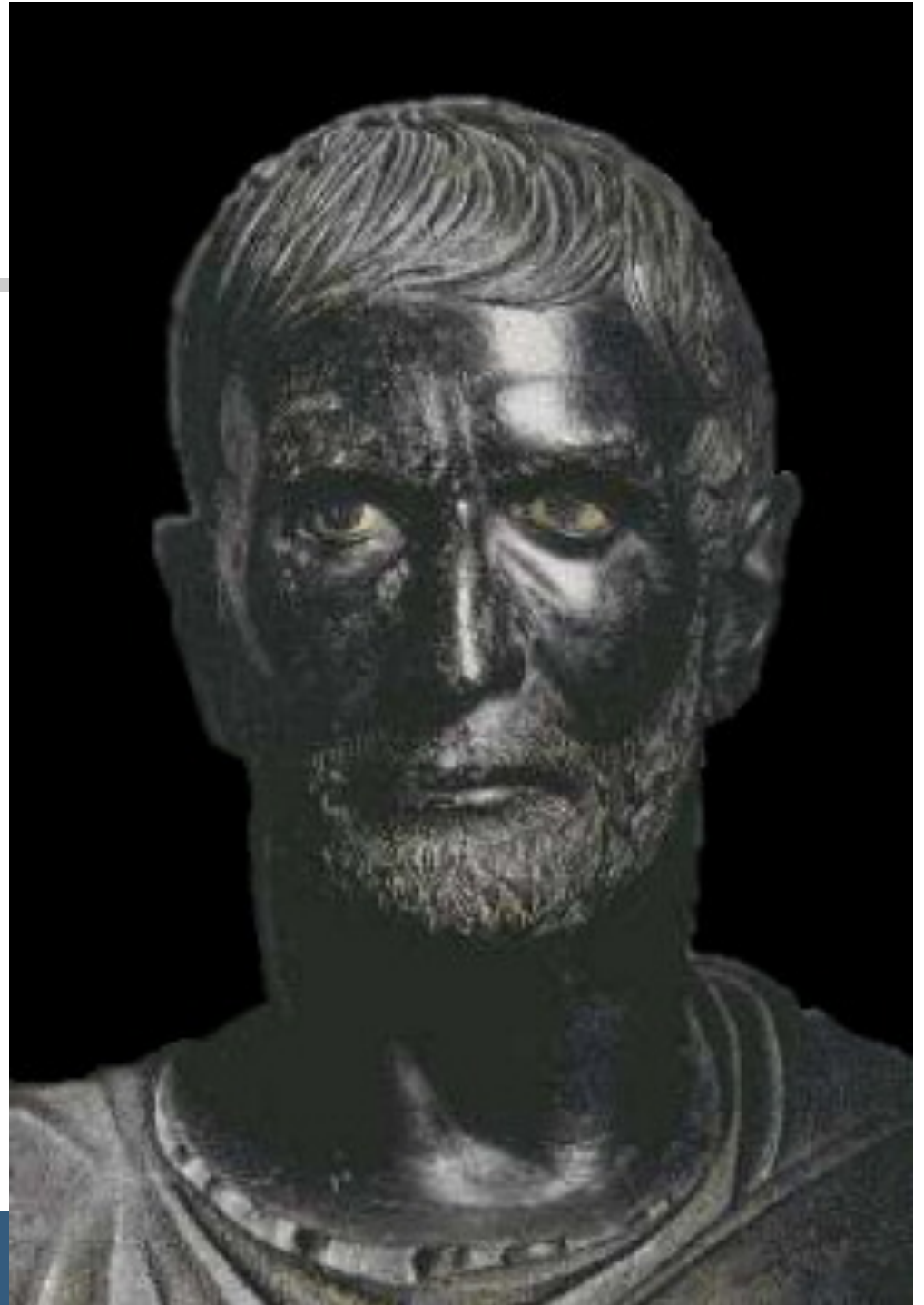


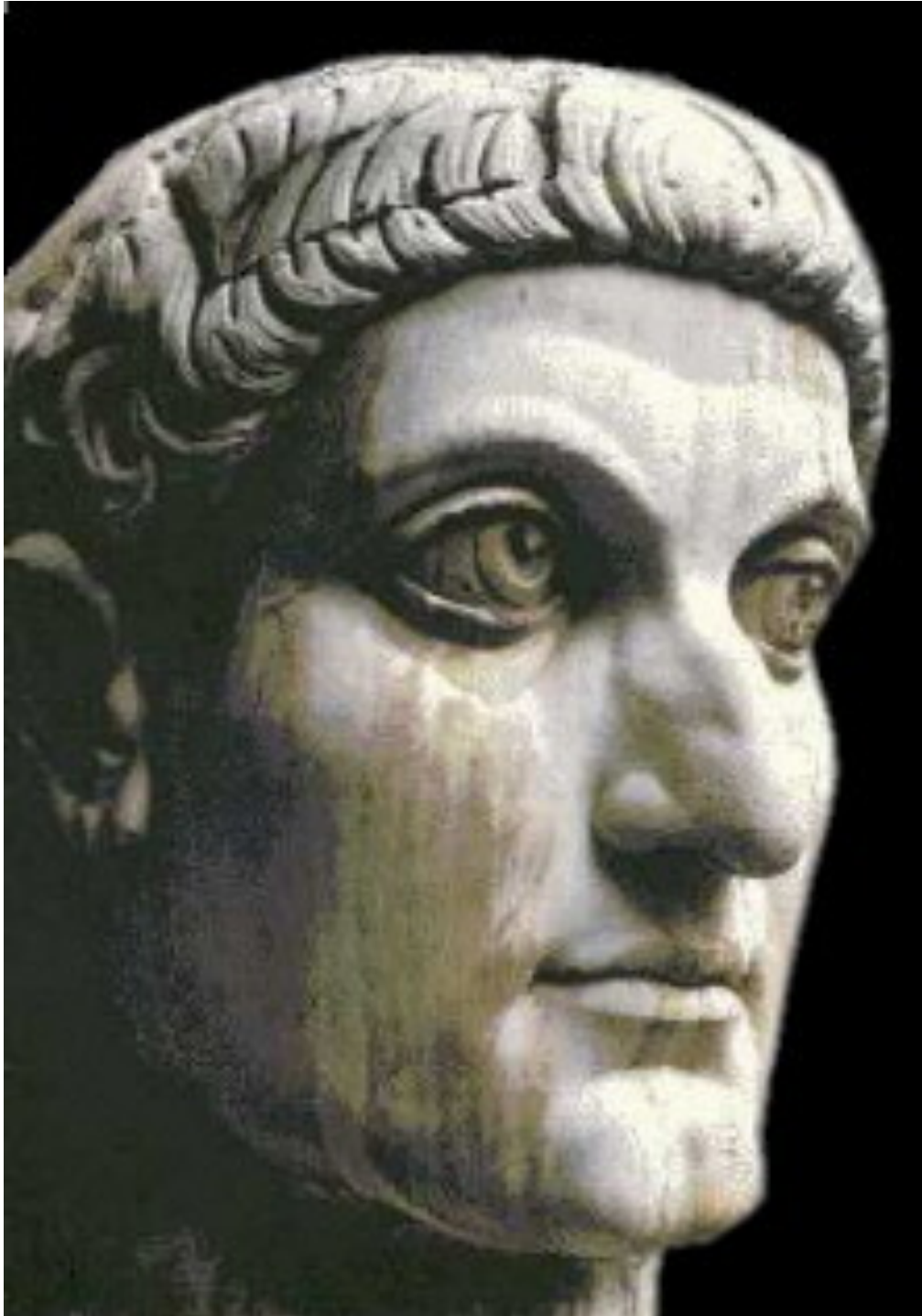
# Aqueducts



- Realistic portraits
- Wax masks of deceased relatives
- Stone and marble for permanency

Brutus





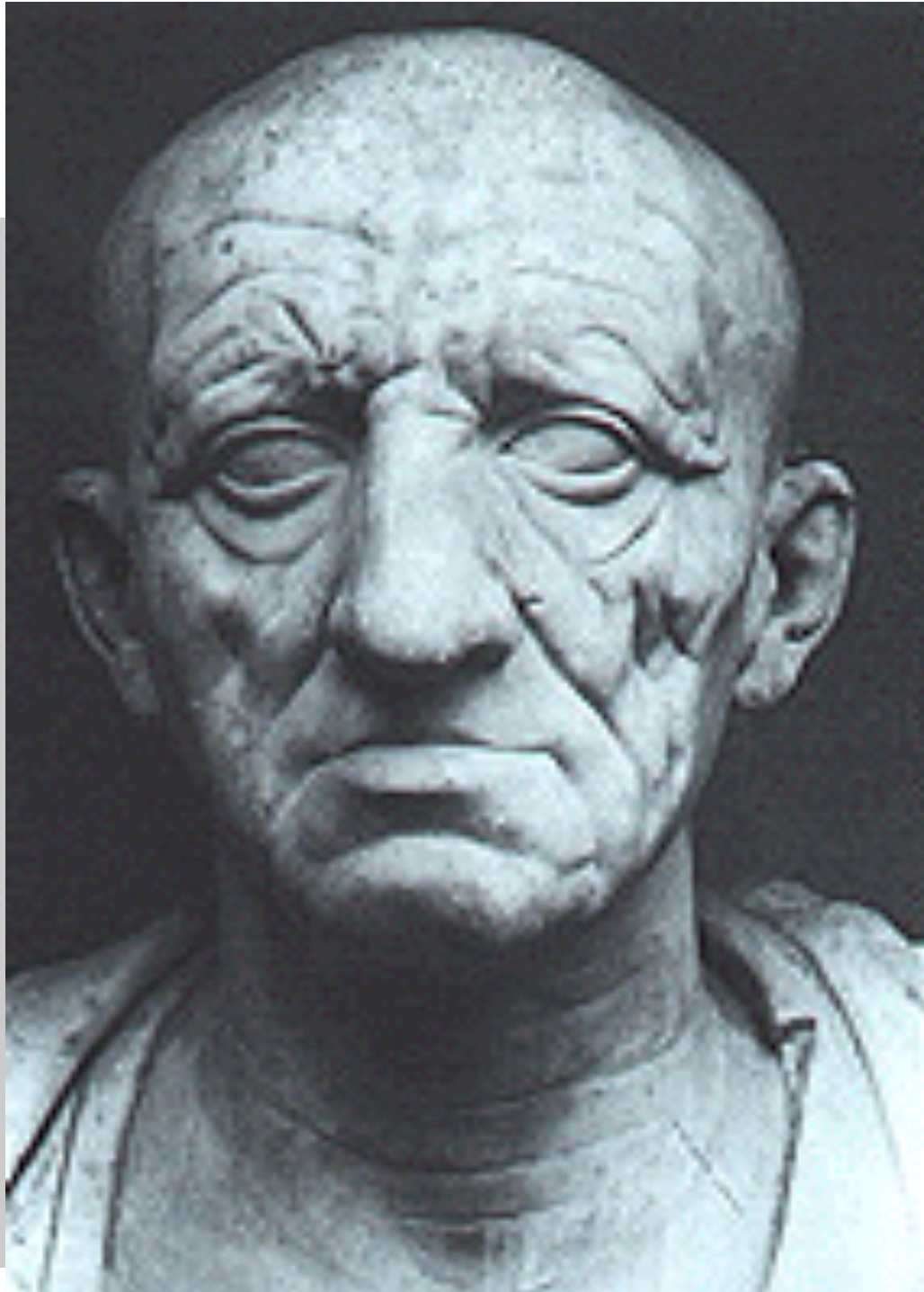
# Greeks vs Romans

Greeks idealistic portraits, Romans for realism.

Greeks for public monuments, Romans for private needs.

Romans express emotions through facial features, head and face were important, Greeks considered a sculpture of a head or a bust incomplete.

Constantine  
the Great



Roman sculpture's two main  
genres were:

- Portrait
- Historical relief



# Women portraits

- It was the reflect of fashions
- It is a realistic depiction of woman
- Special attention to hair style.



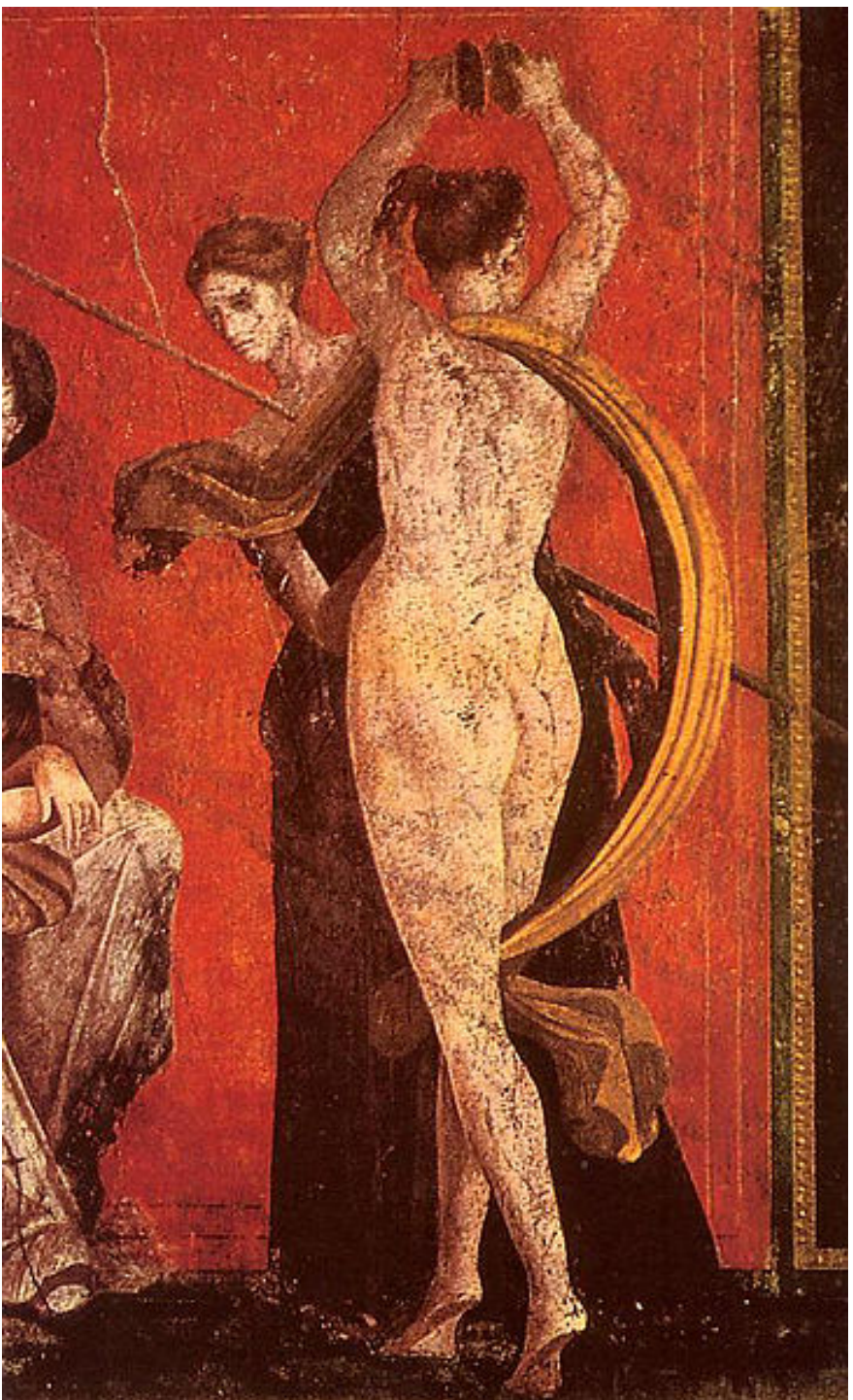
Equestrian  
sculpture



# Painting









---

- Two kinds:

- On wall: Fresco

- On wood: Temple

- Wide range of colors: Black, white, red, yellow and sometimes blue and green

- Perspective was used in barely occasions

# Fresco at Pompeii







# Themes

- Daily life
- War
- Mythology
- Erotic
- Comical
- Nudes were possible according to customs







