



Cubism

- Analytic
- Synthetic
- Collage



1839 Paul Cézanne was born



1881 Pablo Picasso was born.



1882 George Braque was born.

1907 cubism begins.



1908 – 1912 Analytical cubism begins.



1912 – 1919 synthetic cubism begins.

1918 cubism ended.



Les Demoiselles
d'Avignon
Pablo Picasso
1907

Analytic Cubism

Analytic Cubism

- Color was almost non-existent except for monochromatic scheme that included grey, blue and ochre.
- Instead of emphasis on color, focused on forms like the cylinder, sphere and the cone to represent the natural world.



The guitar player
Picasso



Ma Jolie
Picasso



Woman with a guitar
George Braque



Portrait of Picasso
Juan Gris

Synthetic Cubism



Three Musicians
Picasso



Dora Maar
Picasso



Breakfast

Juan Gris

“A picture is not thought out and settled beforehand. While it is being done, it changes as one’s thoughts change. And when it is finished, it goes on changing according to the state of mind of whomever is looking at it”

Picasso





Portrait of a Woman
Picasso



Portrait of a Woman
Picasso



Clown
Picasso



Bust of a Woman
Picasso



Crucifixion
Picasso



Guernica
Picasso



Meninas of Velasquez

Picasso



Still life with grapes and clarinet
Braque



Table
Braque

Billiard table on the light
Braque

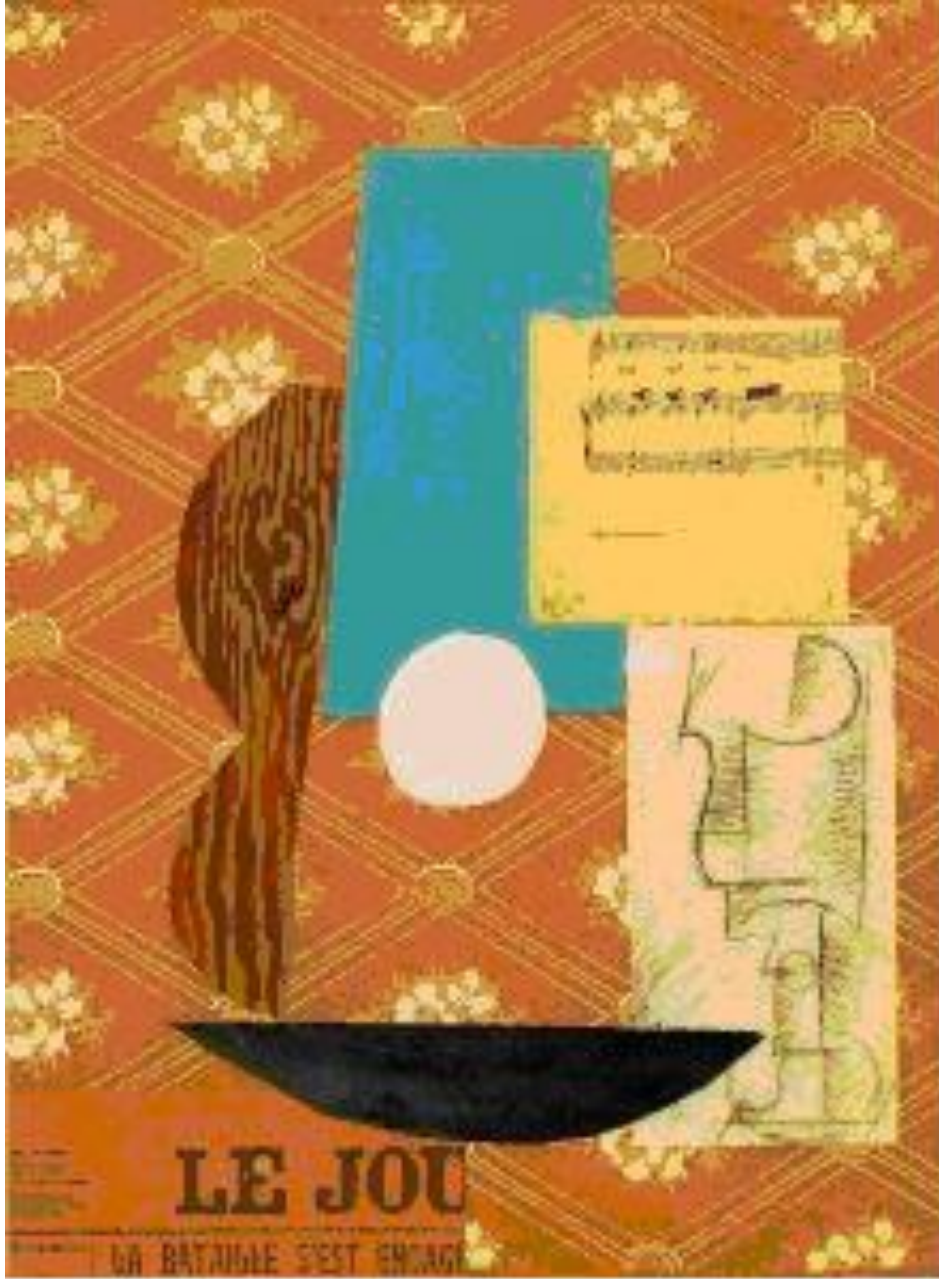


Collage

Pasting lightweight materials or objects onto a flat surface



Guitar
Picasso



Guitar, sheet music
and wine glass
Picasso



Le Jour
Picasso