

Byzantine art



Byzantine Iconography

- **Icon.** A religious work of art. A sign that stands for an object by representing it either concretely or by analogy in a specific culture.
- Focused exclusively on the image with unnecessary decoration
- Egg tempera mixed with pure earth and mineral pigments, and encaustic



Pantocrator



Theotokos



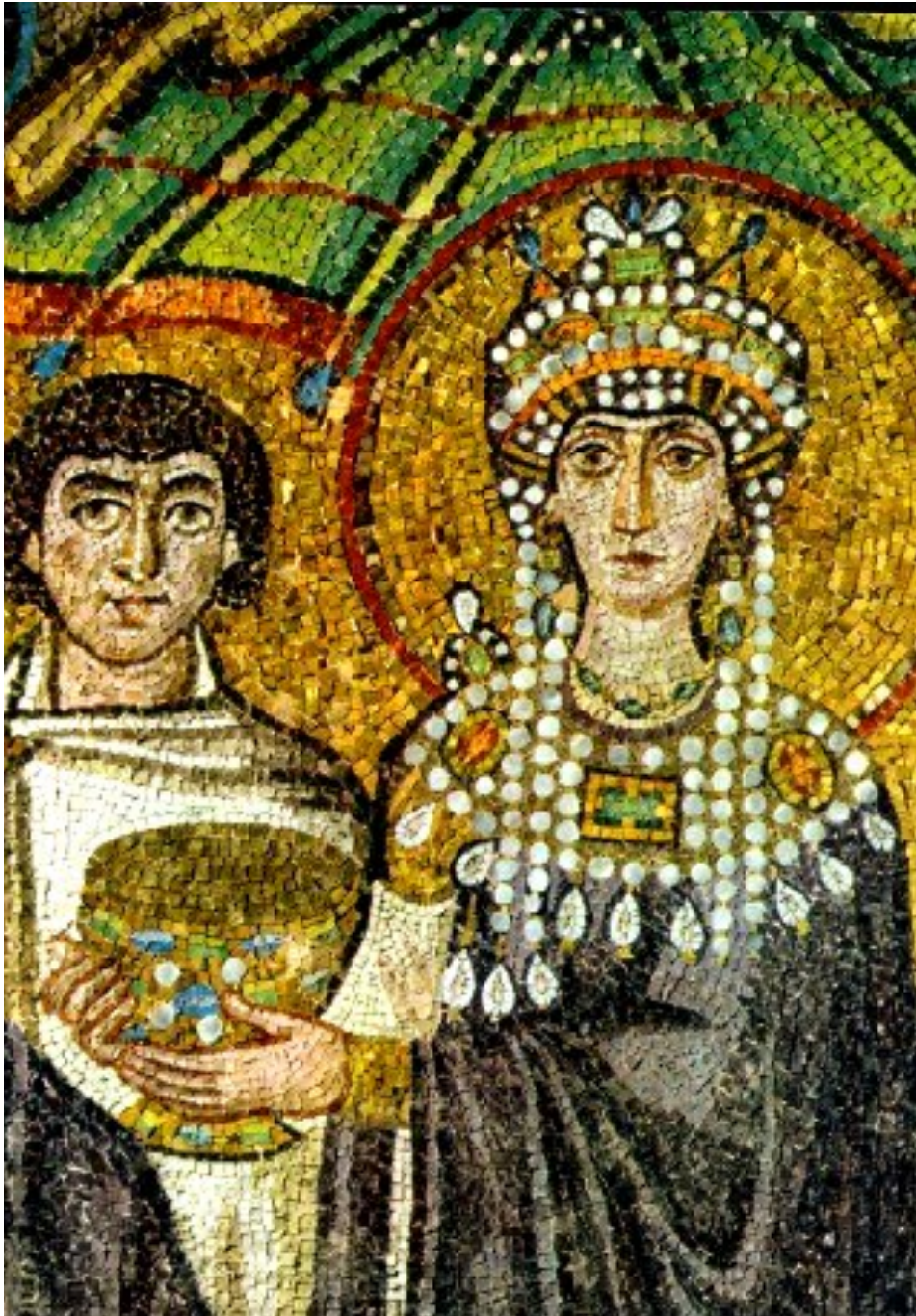


○ Iconography:

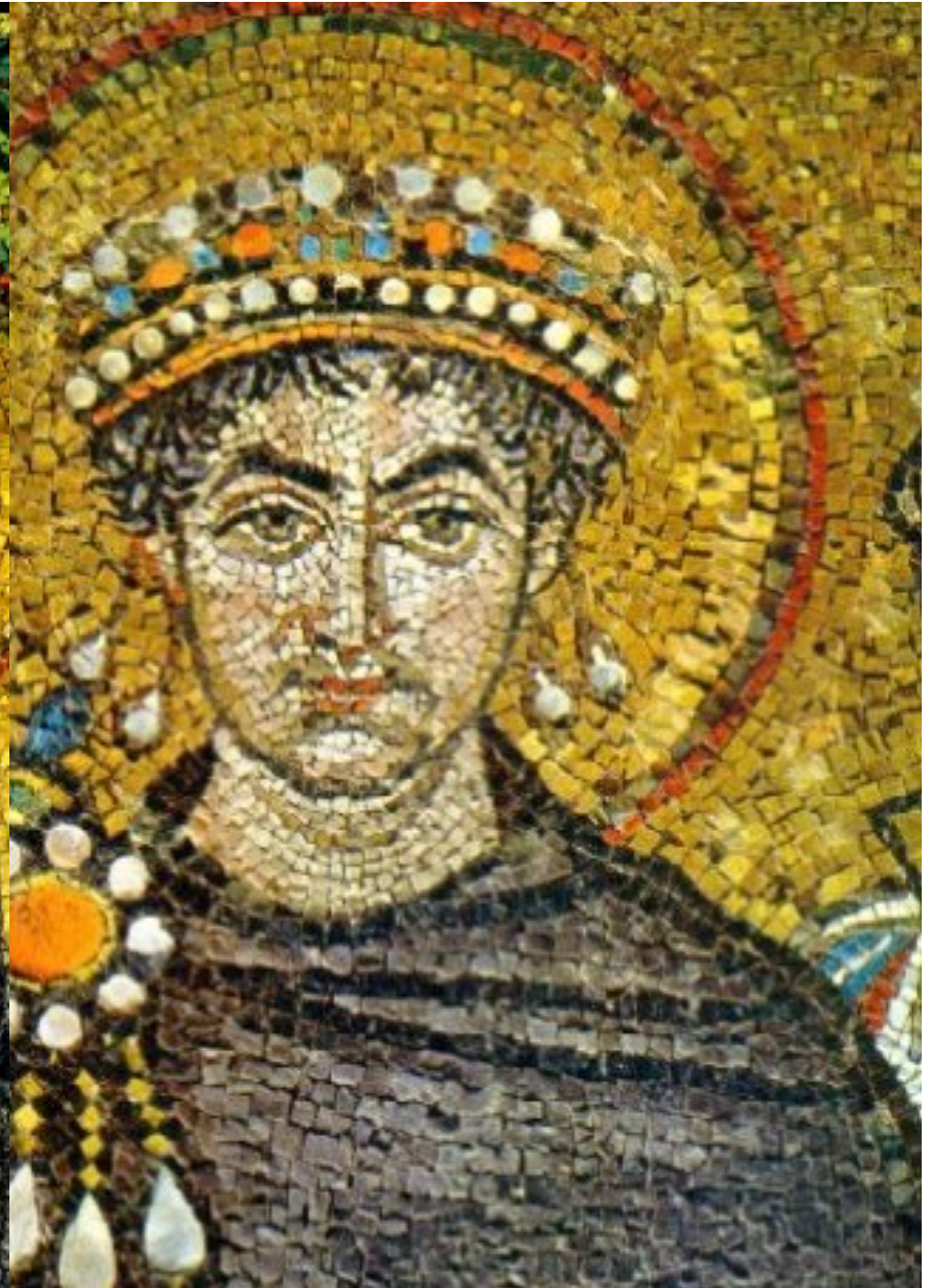
- Christ
- Virgin Mary
- St. John the Baptist

Deesis





Empress Theodora



Emperor Justinian I



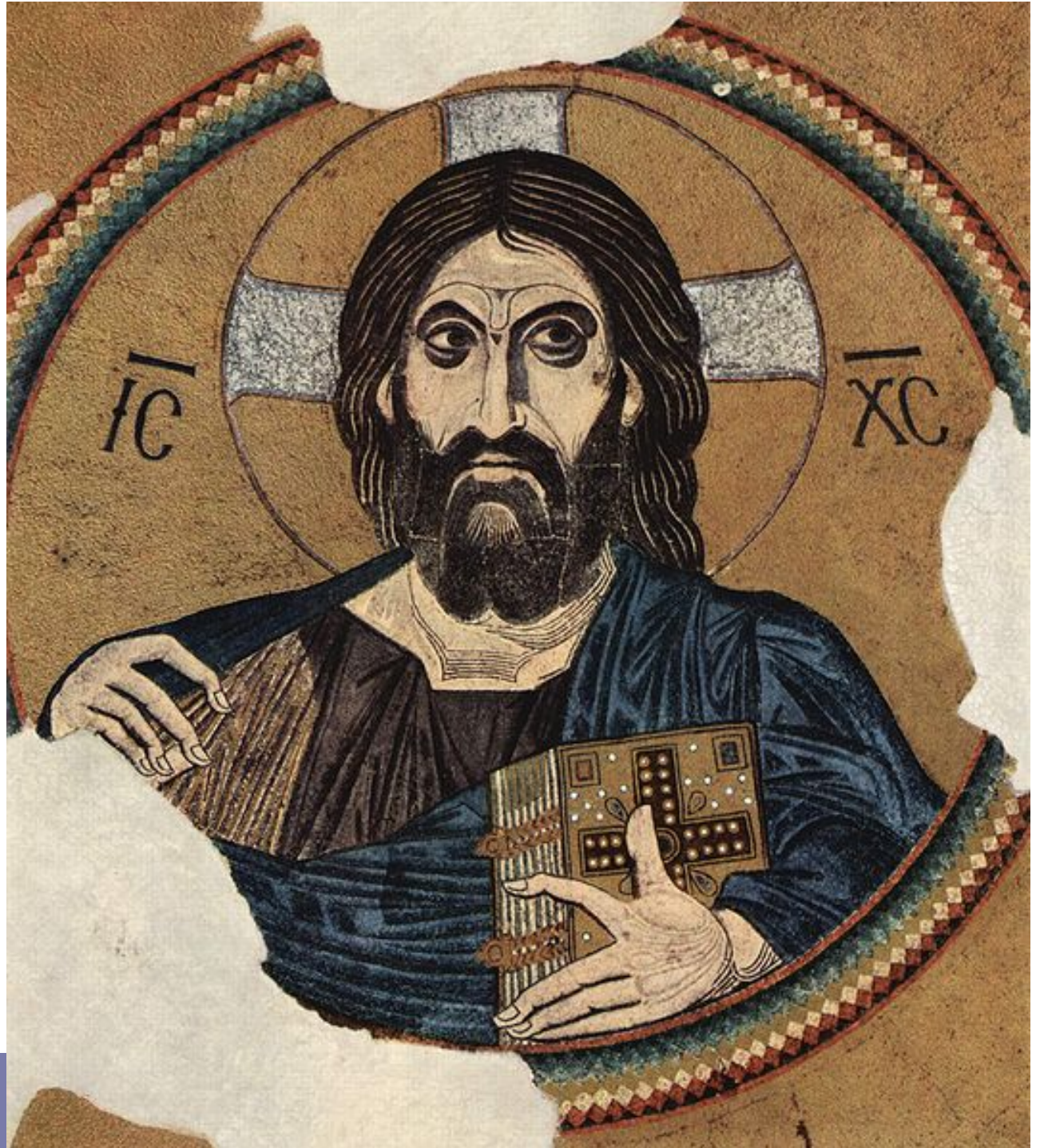




Christ



Christ



Pantocrator



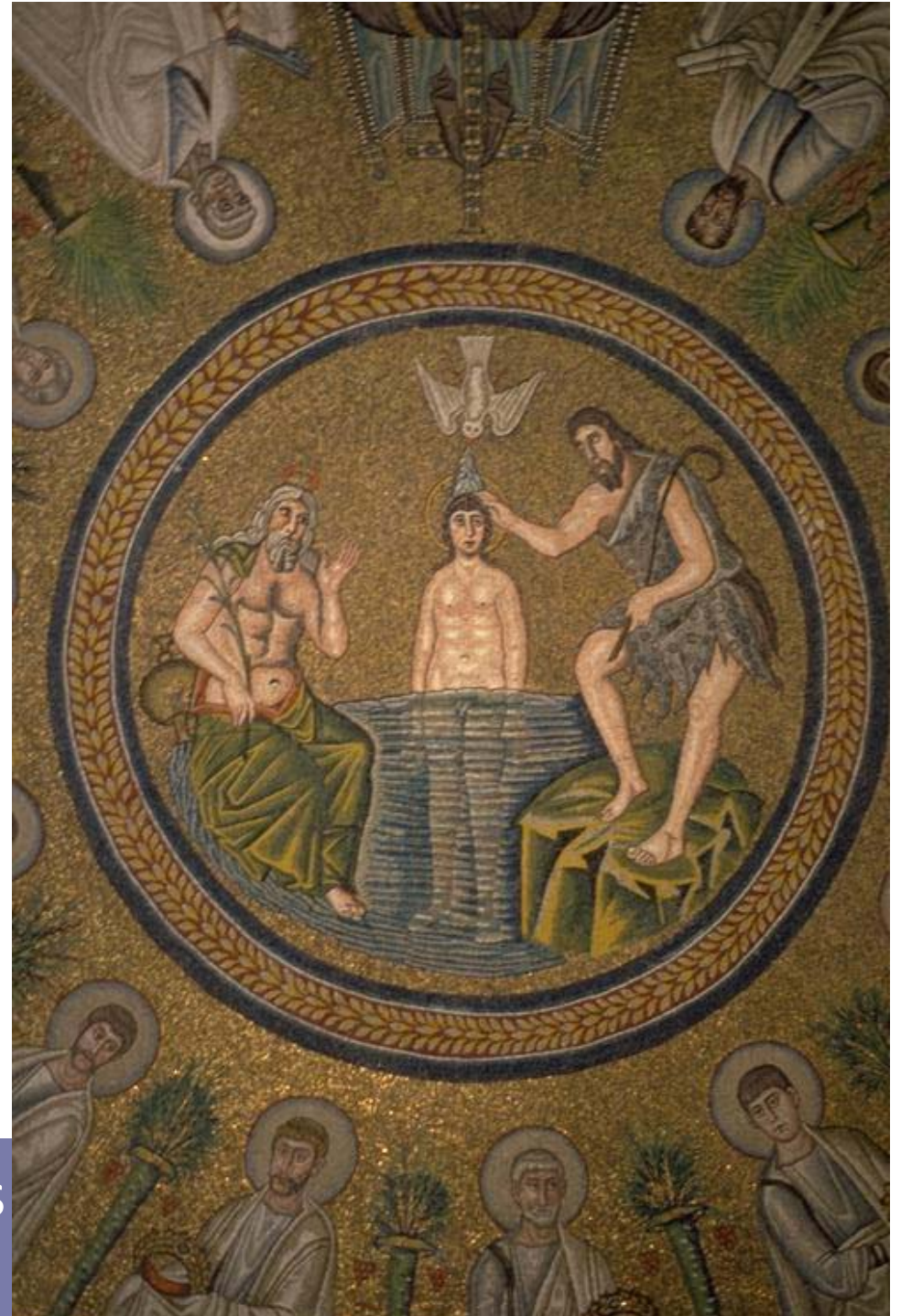


- Pantocrator Christ surrounded by golden rays

Christ in Dome
(Mosaic)



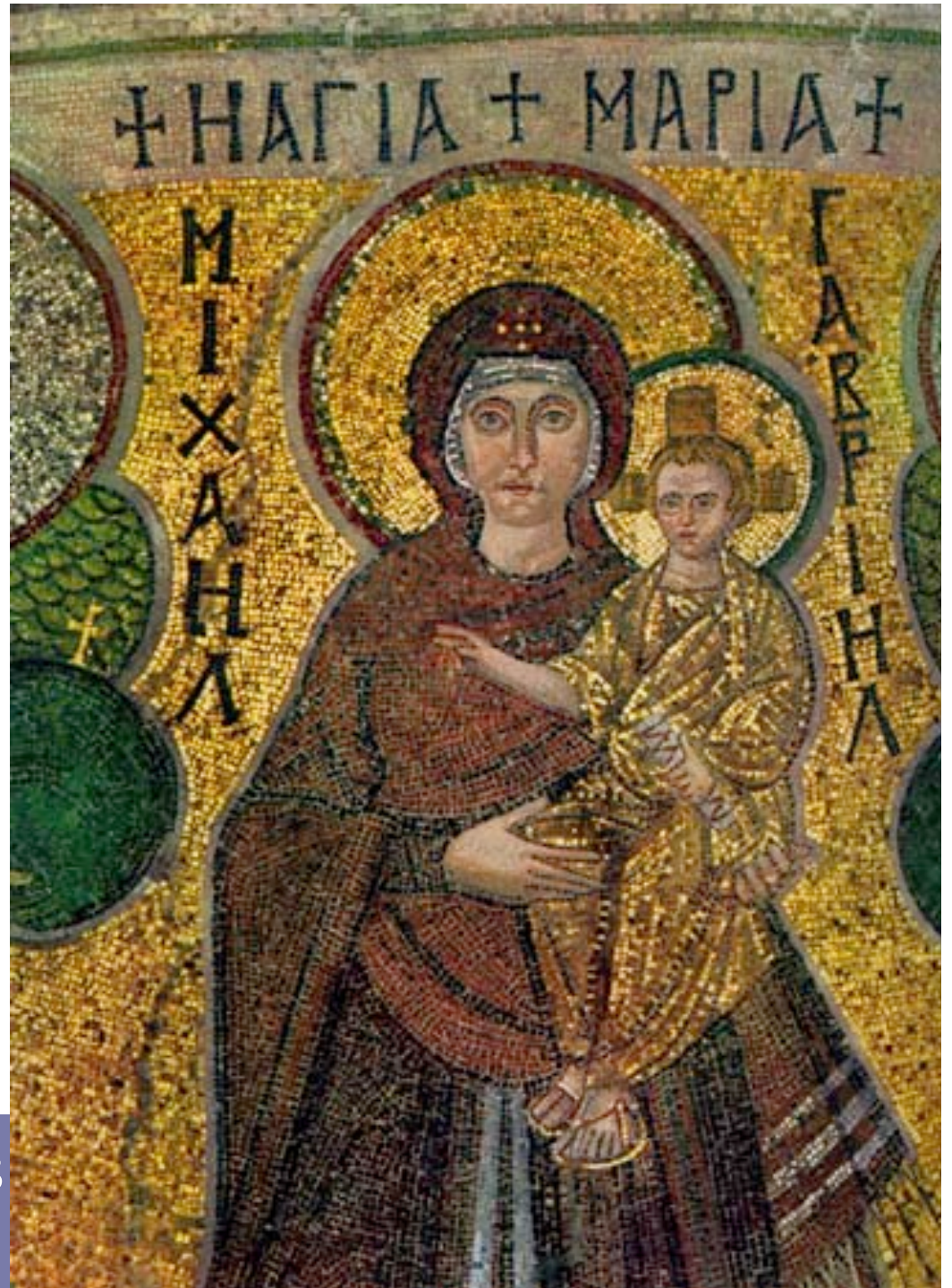




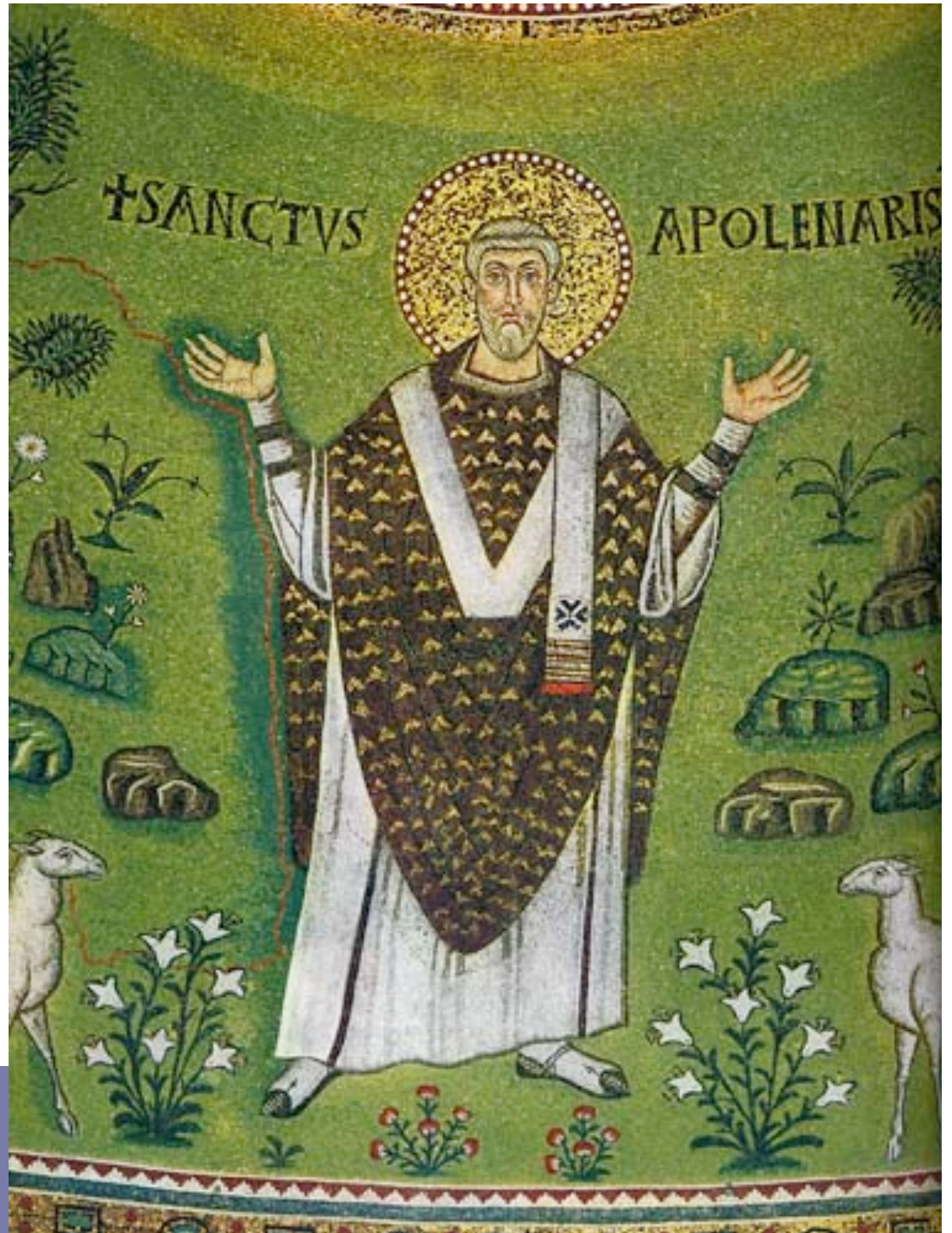
Baptism of Jesus
(Mosaic)



Christ
(Mosaic)



Holy Mary and Jesus
(Mosaic)



St. Apollinaire
(Mosaic)



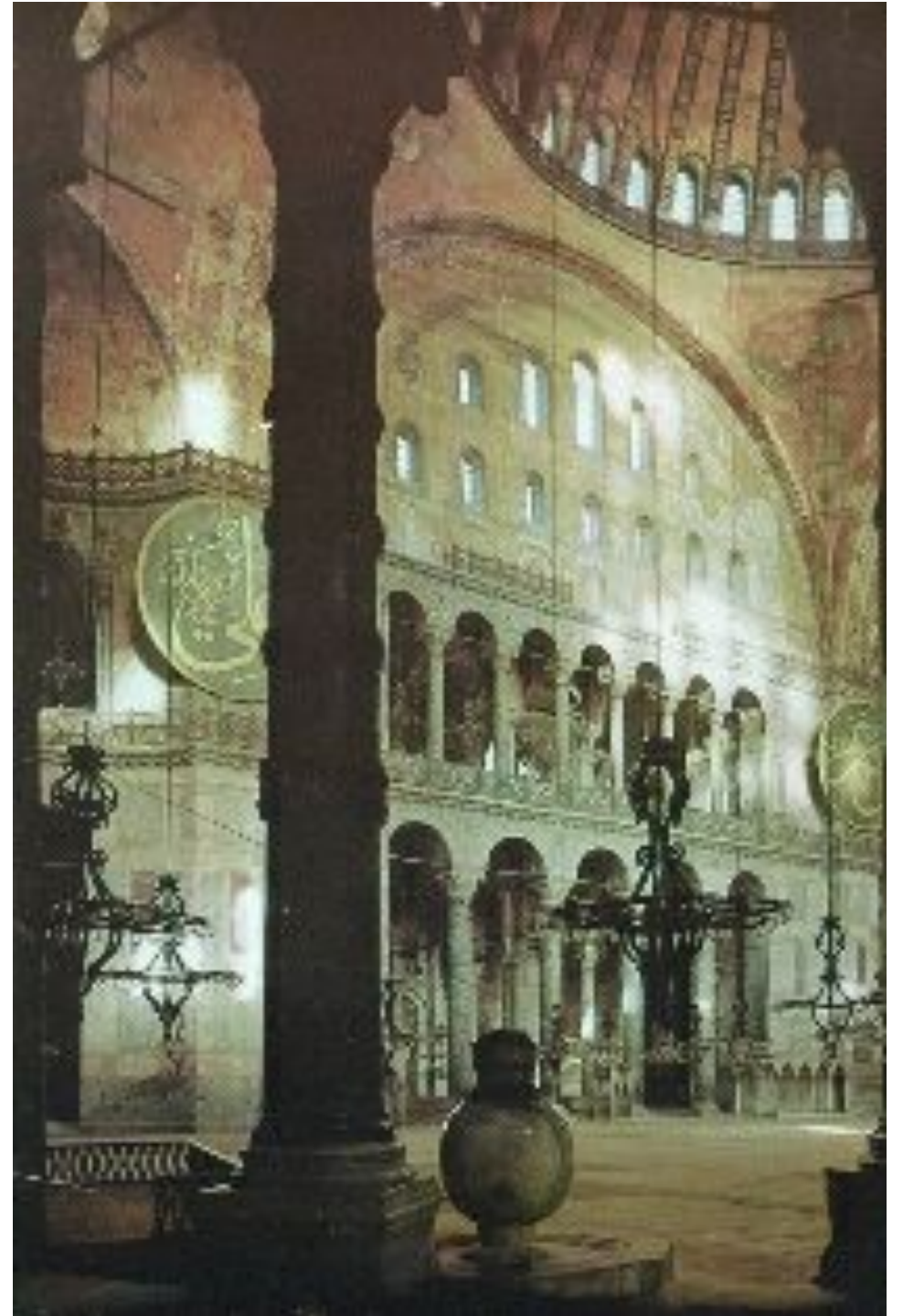


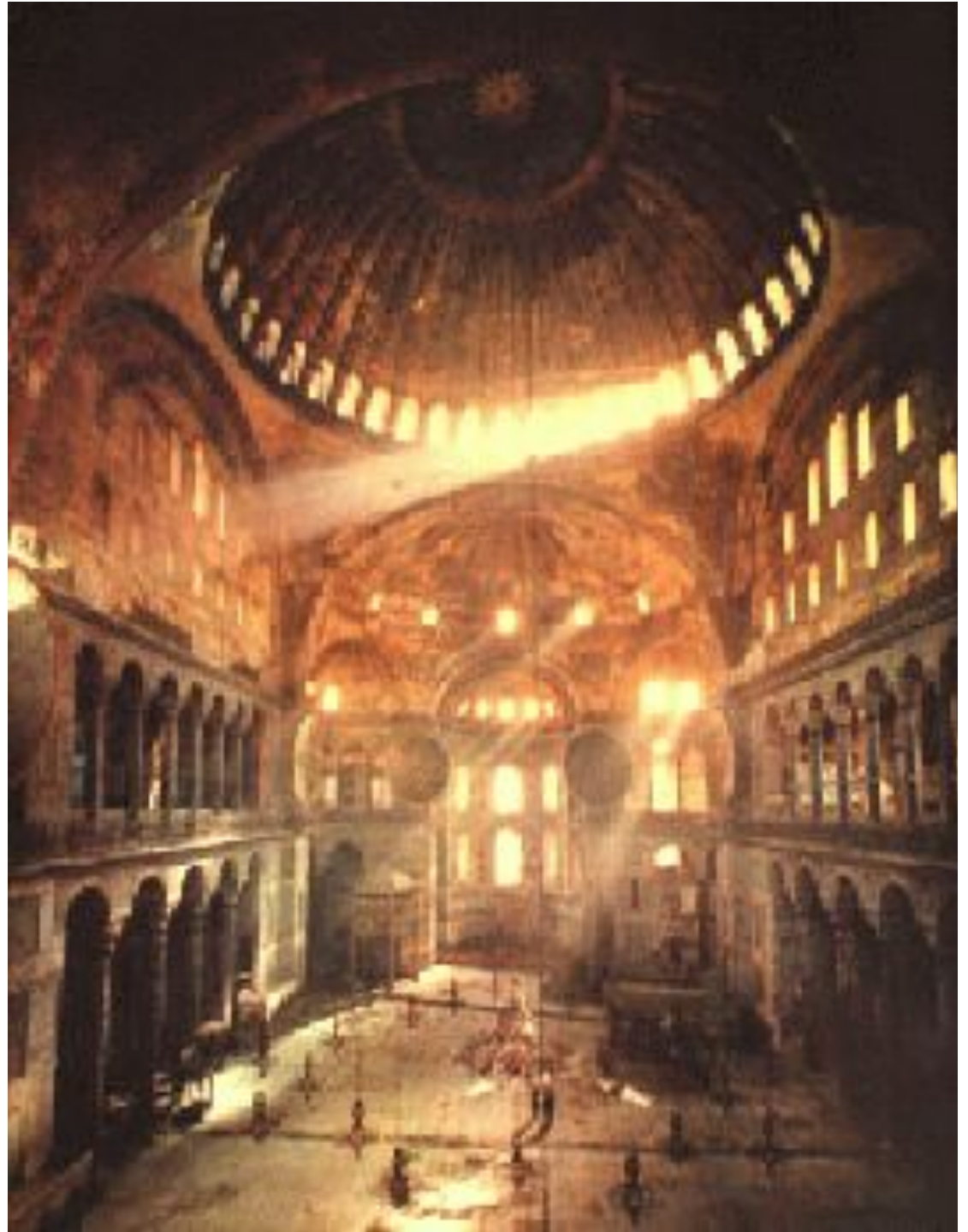


Hagia Sophia
(Holy Sophia)



Hagia Sophia
Istanbul





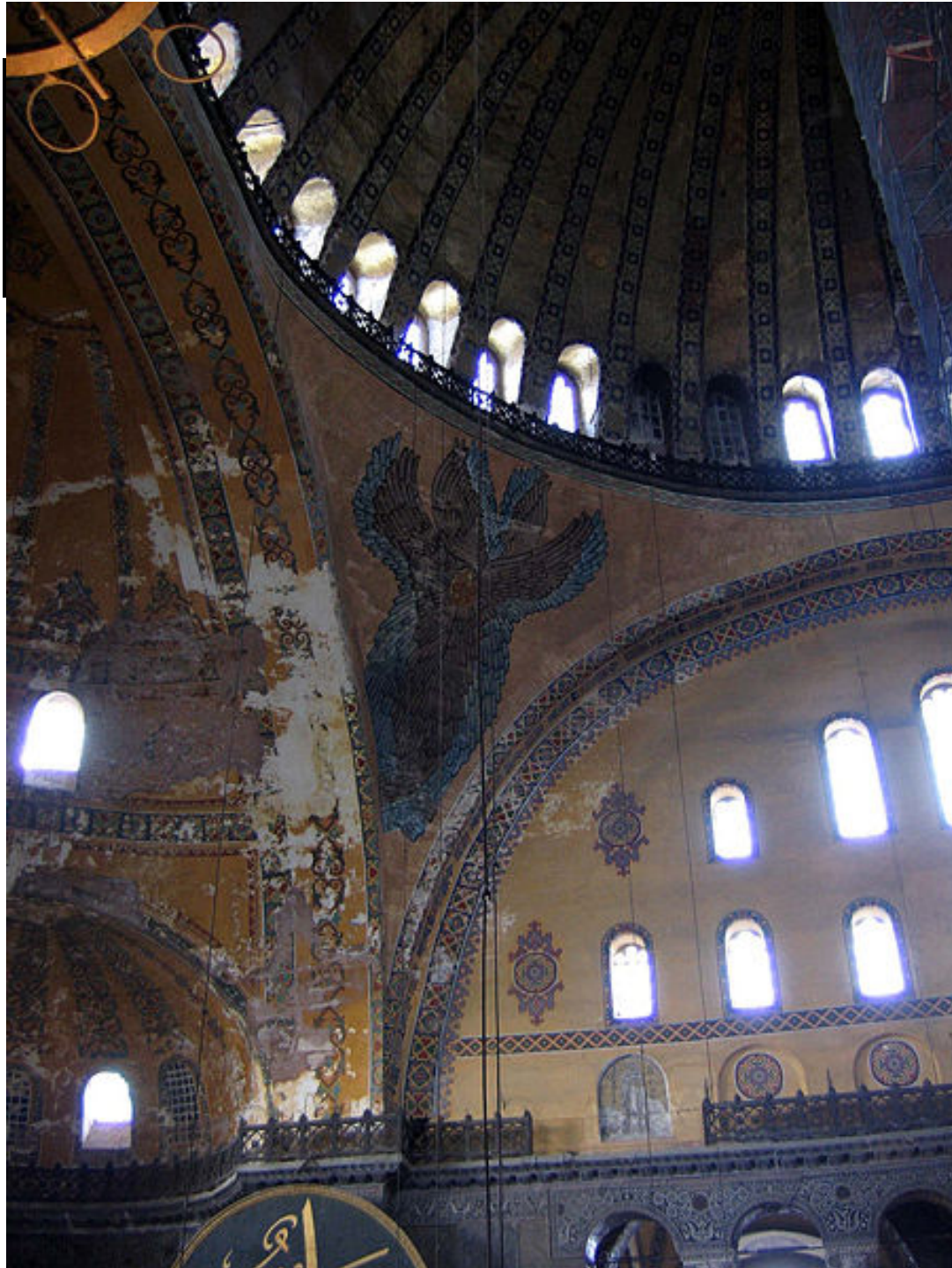




Pantocrator Christ Church in Constantinople



Saint Mark's Basilica - Venice



Pendentive



Domes